

Global Artisan C-Sink – Endorsement, Validation and Verification of Artisan C-Sink Managers

The Artisan C-Sink Manager plays a crucial role in maintaining high standards of quality and craftsmanship while supporting artisans and meeting market demands. An Artisan C-Sink Manager typically has a multifaceted role focused on overseeing the operations and quality of artisan-crafted biochar and C-sinks. Key responsibilities include:

1. **Quality Control:** Ensuring that all sinks meet the established quality standards and specifications set by the Global Artisan C-Sink Standard.
2. **Production Oversight:** Managing the production process, including coordinating with Artisan Biochar Producers to maintain efficiency and consistency in craftsmanship.
3. **Training and Development:** Providing training and support to Artisan Biochar Producers to enhance their skills and ensure adherence to best practices.
4. **Supply Chain Management:** Overseeing the sourcing of materials, ensuring they are sustainable and of high quality.
5. **Compliance and Standards:** Ensuring that all operations comply with health, safety, and environmental regulations as well as the standards set by CSI and the Artisan C-Sink Manager.
6. **Collaboration and Communication:** Working closely with other departments, stakeholders, and Artisan Biochar Producers to foster collaboration.

The Artisan C-Sink Manager can delegate defined tasks of the managing and monitoring process to other organizations or persons, such as the training of making biochar, C-Sink tracking, and on-site controls. However, the Artisan C-Sink Manager is entirely responsible for all activities related to the planning, production, monitoring, and declaration of Global Artisan C-Sinks as described in the present guidelines. Companies, non-governmental organizations, farmer unions or regional authorities may become Artisan C-Sink Manager for the Global Artisan C-Sink Standard.

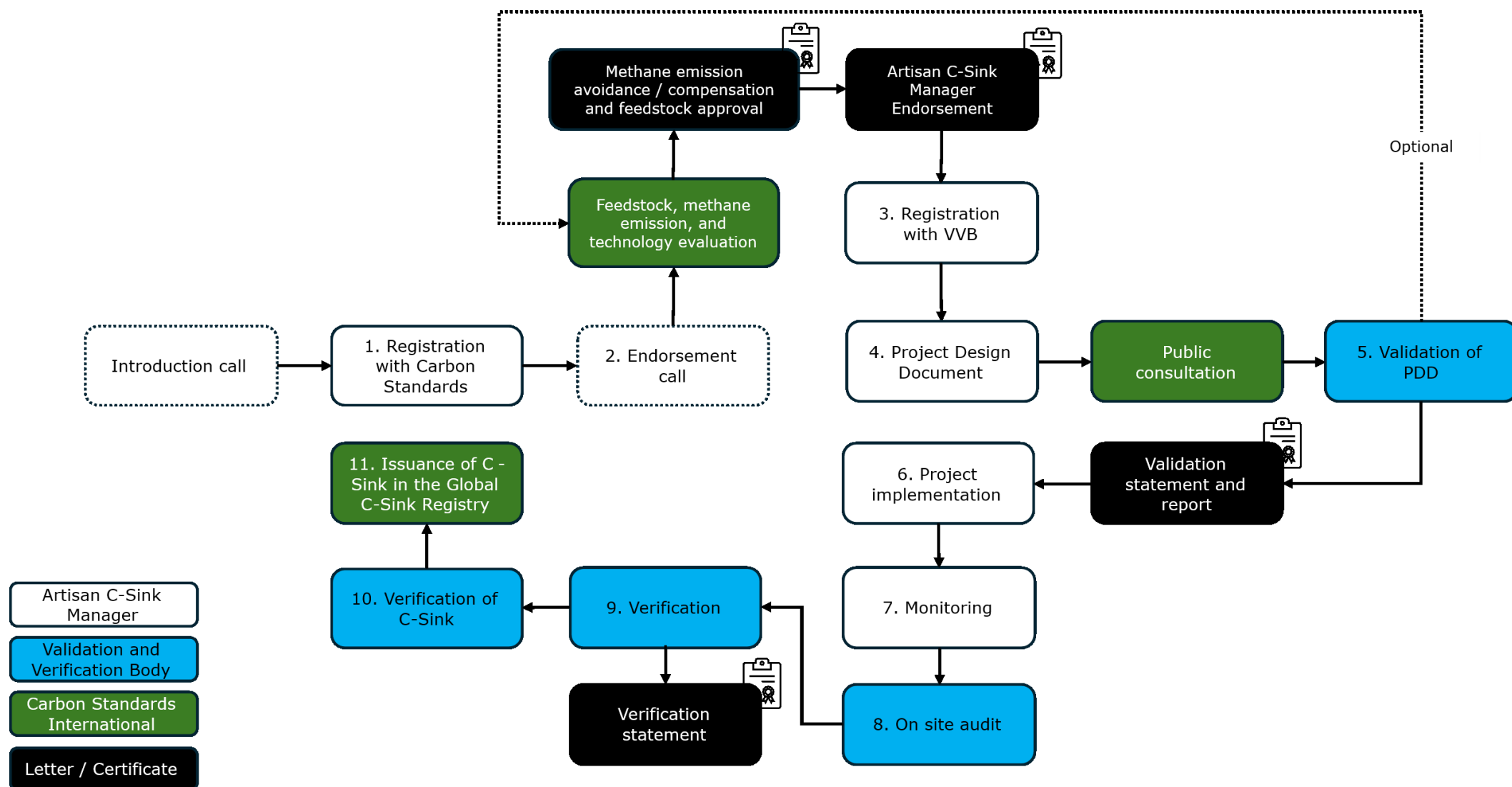
This document aims to provide a clear understanding of the steps involved to obtain the endorsement, the validation and verification as Artisan C-Sink Manager for the Global Artisan C-Sink standard by Carbon Standards International AG (CSI).

The endorsement and validation/verification process consists of three phases:

1. The endorsement phase by CSI to check if the Artisan C-Sink Manager fulfil basic requirements and the understanding of the process.
2. During the validation it will be checked whether a project meets all rules and requirements from the Global Artisan C-Sink standard and is conducted by approved, qualified and independent Validation and Verification Bodies (VVB). A list of the endorsed VVBs can be found on the [website](#).
3. The verification by a VVB confirms that the outcome set out in the project document description (PDD) has been achieved and quantified according to the requirements of the Global Artisan C-Sink Standard and includes an on-site inspection by the VVB.

Please note:

The PDD, validation and verification statement, monitoring report(s), and any non-conformities identified by the VVB will be made publicly accessible through the Global C-Sink Registry. It is the responsibility of the C-Sink Manager to inform the VVB if any information in these reports is deemed confidential.



1. Endorsement

In the endorsement process, the aim is to clarify the basic requirements and to make certain technical clarifications. This includes, among other things, dMRV, pyrolysis technologies, and possible methane compensations. Additionally, the Project Design Document (PDD) and the process will be explained in detail.

Step*)	Description	Responsible party
	The Artisan C-Sink Managers reaches out CSI for a first introduction call .	Artisan C-Sink Manager
1	<p>The Artisan C-Sink Manager registers for the endorsement process. Registration can be done through this link.</p> <p>With the registration confirmation, the Artisan C-Sink Manager gets access to the Easy-Cert Academy and the booking link for the Endorsement call. In this call, the process and steps involved during the endorsement are explained again, the PDD concept is discussed and further questions answered.</p>	CSI / Artisan C-Sink Manager
2	<p>The Artisan C-Sink Manager prepares and submits the necessary methane emission avoidance requests, other documents. Training videos and information regarding dMRV and the pyrolysis system are also discussed.</p> <p><u>Additional endorsement:</u> If a dMRV is selected that has not yet received endorsement, a separate endorsement call will be conducted. The requirement can be seen on this document.</p> <p>If an Artisan C-Sink Manager is interested in developing their own technology, please refer to this document.</p> <p>The endorsement of new dMRV and technology requires a separate endorsement process. To initiate this process, please send an email to service@carbon-standards.com.</p>	Artisan C-Sink Manager
	<p>Upon successful completion, the Artisan C-Sink Manager will receive an endorsement designating them as an "Endorsed Artisan C-Sink Manager". The Artisan C-Sink Manager will be listed on the website of CSI.</p> <p>After the endorsement the costs for process will be invoiced.</p> <p>If the endorsement is not successful, the Artisan C-Sink Manager has the chance to improve their processes and start the endorsement process again. The costs for the endorsement will be invoiced in any case.</p>	CSI

*) The numbering is in accordance with the graph of Endorsement, Validation and Verification Process Global Artisan C-Sink Manager on page 2.

2. Validation and Verification

After receiving endorsement from CSI, the Artisan C-Sink Manager will be connected to a VVB and enters the validation and verification process. This phase is organized, invoiced, and executed in partnership with the VVB and is their responsibility. Therefore, the following steps are provided for orientation purposes only. The VVB will communicate the specific steps, documents, and information required.

2.1 Validation

Step*)	Description	Responsible party
3	The Artisan C-Sink Manager registers for the service at the VVB.	Artisan C-Sink Manager
4	The Artisan C-Sink Manager submits the PDD, Annexes and other required documents to the VVB.	Artisan C-Sink Manager
5	The VVB validates the PDD, Annexes and additional documents and issues a validation statement. If applicable: Definition of non-compliances and corrective actions for the validation by VVB.	VVB
	Submission of corrective actions by the Artisan C-Sink Manager.	Artisan C-Sink Manager
	Independent review and expression of an opinion on the PDD by the VVB.	VVB

*) The numbering is in accordance with the graph of Endorsement, Validation and Verification Process Global Artisan C-Sink Manager on page 2.

Please note that the PDD and Monitoring Plan as well as a validation report by the VVB and the non-conformities found, and any other relevant project documents deemed necessary by the VVB to ensure transparency will be made publicly available through the Global C-Sink Registry. It is the responsibility of the Artisan C-Sink Manager to mark documents as confidential. If you wish that certain information is treated as confidential, please submit two versions (one where confidential information is made illegible and one containing all information).

2.2 Verification

Step*)	Description	Responsible party
6, 7	Implementation of the project, Internal Control System and Quality Management by the Artisan C-Sink Manager.	Artisan C-Sink Manager
8	On-site audit by the VVB where the effectiveness of the Internal Control System is checked an Artisan Pros/C-Sink Farmers and Network, as well as C-Sink Cooks (if applicable) are visited to check the implementation of the requirements.	VVB
	If applicable: Definition of non-compliances and corrective actions by the VVB.	VVB
	If applicable: Implementation of corrective actions by the Artisan C-Sink Manager.	Artisan C-Sink Manager
9	Verification Statement by the VVB confirming that the outcomes set out in the PDD have been achieved and quantified according to the standard.	VVB

*) The numbering is in accordance with the graph of Endorsement, Validation and Verification Process Global Artisan C-Sink Manager on page 2.

3. Issuance of C-Sink Credit

Step*)	Description	Responsible party
9	VVB will send the validated PDD, the validation and verification statement as well as other documents to CSI, which will then add them to the project page in the Global C-Sink Registry.	VVB and CSI
10.1	Once the biochar is applied to a permanent matrix, the dMRV provider will upload all necessary information to the Global C-Sink Tool or provide all necessary information to the Artisan C-Sink Manager, in order to trigger the verification request	dMRV provider, Artisan C-Sink Manager
10.2	The VVB will verify the uploaded data on a continuous basis. If rejected, the Artisan C-Sink Manager/dMRV provider will get notified by the Global C-Sink Tool.	VVB
11.1	If approved, the credits will be issued by CSI in the Global C-Sink Registry. In the Global C-Sink Tool profile of the Artisan C-Sink Manager, the verified and issued credits will be visible and directly linked to the project connected.	CSI
11.2	A C-Sink Trader can afterwards retire carbon credits in the Global C-Sink Registry as part of the selling process. The C-Sink Trader can be a third-party (e.g. marketplace) or the Artisan C-Sink Manager itself can become a C-Sink Trader.	C-Sink Trader, Artisan C-Sink Manager

*) The numbering is in accordance with the graph of Endorsement, Validation and Verification Process Global Artisan C-Sink Manager on page 2.